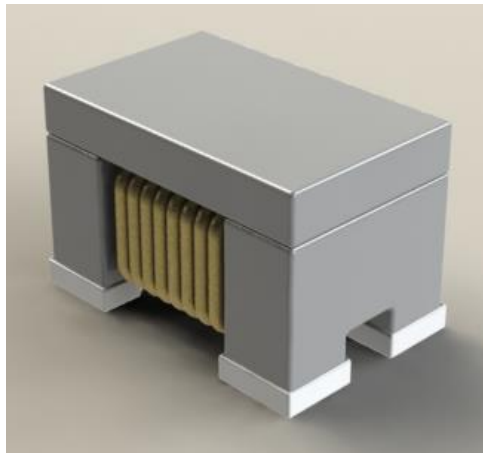


ABCO EMC COMPONENTS

AEC-Q200

Common Mode Filter **ECTA32P2 Series**



5448-4, Sangdaewon-dong, Jungwon-gu,
Seongnam-si, Gyeonggi-do, KOREA

Sales Dept. TEL:82-31-730-5083

FAX:82-31-730-5152

Eng. Dept. TEL:82-31-730-5053

FAX:82-31-730-5153

ABCO ELECTRONICS CO., LTD.

▣ **Features**

1. High common mode impedance at high frequency cause excellent noise suppression performance.
2. 100% Lead(Pb) & Halogen-Free and RoHS compliant.
3. High reliability -Reliability tests comply with AEC-Q200
4. Operating temperature -55~+125°C (Including self - temperature rise)

▣ **Ordering Code**

ECTA 32 P2 - 510

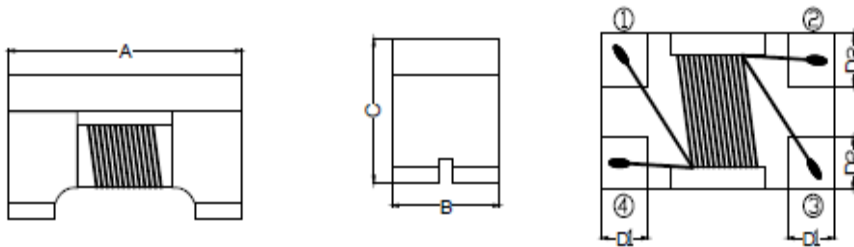
① ② ③ ④

① Series name	② Dimensions(mm)	③ Number of Lines	
ECTA	32 : 3.2(L) × 2.5(W)	P2	2Lines

④ Inductance(μH)	
110	11
101	100

▣ Shapes and Dimensions

Unit: mm



Series	A	B	C	D1	D2
ECTW32P2	3.2±0.2	2.5±0.2	2.5 Max.	0.55±0.15	0.75±0.20

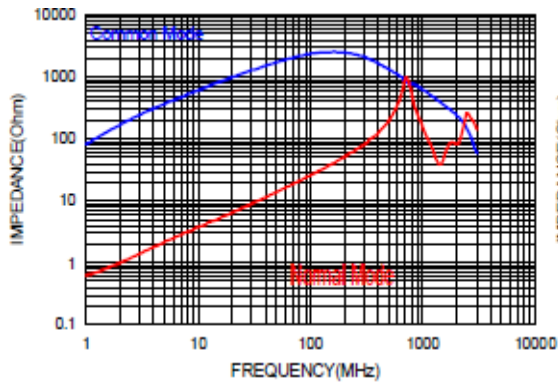
▣ Electrical Characteristics

Part Number	Common mode Impedance(Ω)		Inductance(μH) +50/-30%	DC Resistance (Ω) Max.	Rated Current (mA)	Rated Volt. (Vdc)	IR (MΩ) min
	min.	typ.					
ECTA32P2-110	300	550	11	0.4	300	80	10
ECTA32P2-220	500	1100	22	0.5	250	80	10
ECTA32P2-510	1000	2600	51	0.7	200	80	10
ECTA32P2-101	2200	5100	100	1.5	150	80	10
ECTA32P2-201	7000	10000	200 +30/-10%	5.5	70	80	10

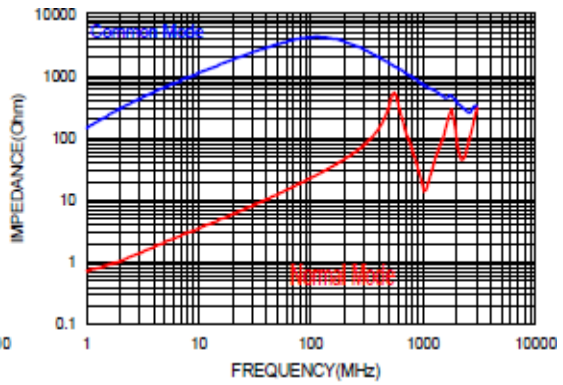
* Test Frequency : Impedance 10MHz, Inductance 100kHz/0.1V

■ Typical Impedance v.s. Frequency Curve

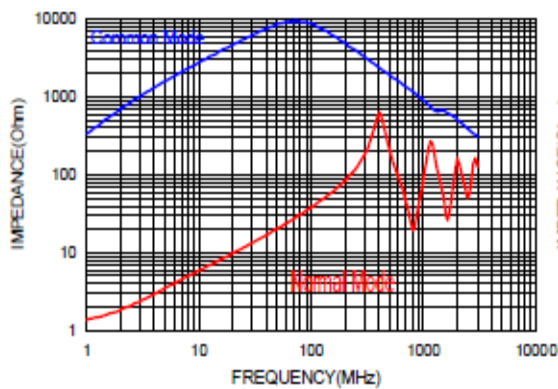
ECTA32P2-110



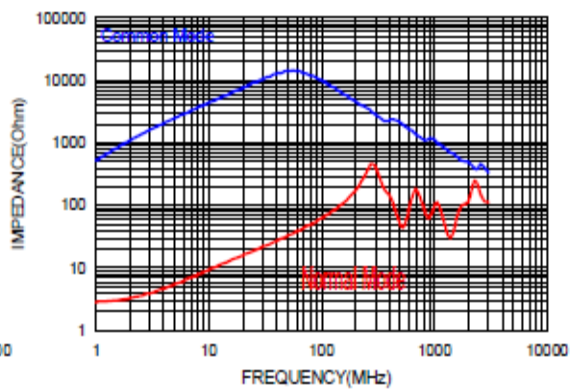
ECTA32P2-220



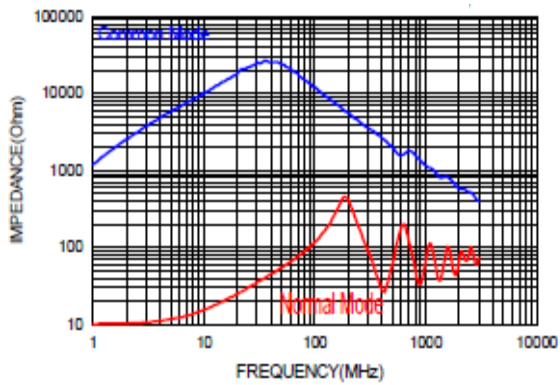
ECTA32P2-510



ECTA32P2-101



ECTA32P2-201



■ Schematic Diagram

