

ABCO Bead COMPONENTS

**AEC-Q200**

## EDMC160808-ABK Series



5448-4, Sangdaewon-dong, Jungwon-gu,  
Seongnam-si, Gyeonggi-do, KOREA

Sales Dept. TEL:82-31-730-5082

FAX:82-31-730-5152

Eng. Dept. TEL:82-31-730-5053

FAX:82-31-730-5153

---

ABCO ELECTRONICS CO., LTD.

### ■ Features

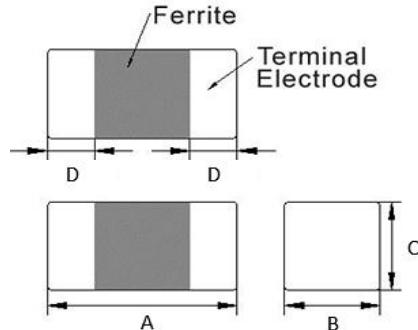
1. This specification applies to Multilayer Chip ferrite Bead for Automotive Electronics based on AEC-Q200 except for Power train and Safety.
2. Operating temperature -55°C ~ +125°C. (Including self - temperature rise)

### ■ Ordering Code

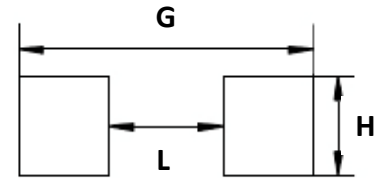
<b>EDMC</b>	<b>160808</b>	<b>T</b>	<b>-</b>	<b>100</b>	<b>Y</b>	<b>-</b>	<b>ABK</b>
①	②	③		④	⑤		⑥

① Type	② Dimensions(mm)	③ Packing						
EDMC	160808 : 1.6(L) × 0.8(W) × 0.8(T)	T      TAPING						
④ Impedance(Ω)	⑤ Tolerance	⑥ Internal Code						
<table style="width: 100%; border-collapse: collapse;"> <tr> <td style="width: 50%; border-right: 1px solid black; text-align: center;">100</td> <td style="width: 50%; text-align: center;">10</td> </tr> <tr> <td style="border-right: 1px solid black; text-align: center;">101</td> <td style="text-align: center;">100</td> </tr> <tr> <td style="border-right: 1px solid black; text-align: center;">102</td> <td style="text-align: center;">1000</td> </tr> </table>	100	10	101	100	102	1000	Y : ±25%	ABK
100	10							
101	100							
102	1000							

### ■ Shapes and Dimensions



### ■ Recommended PC Board Pattern



Series	A(mm)	B(mm)	C(mm)	D(mm)
EDMC160808-ABK	1.6±0.15	0.8±0.15	0.8±0.15	0.3±0.2

L(mm)	G(mm)	H(mm)
0.7~0.8	1.8~2.0	0.6~0.8

### ■ Electrical Characteristics

Part Number	Impedance ( $\Omega \pm 25\%$ )	Test Freq.	RDC( $\Omega$ ) Max.	Rated Current(mA)
				$\Delta T = 30^\circ\text{C}$ Max.
EDMC160808T-100Y-ABK	10	100MHz, 200mV	0.05	500
EDMC160808T-300Y-ABK	30	100MHz, 200mV	0.10	400
EDMC160808T-600Y-ABK	60	100MHz, 200mV	0.10	400
EDMC160808T-800Y-ABK	80	100MHz, 200mV	0.15	400
EDMC160808T-121Y-ABK	120	100MHz, 200mV	0.25	400
EDMC160808T-181Y-ABK	180	100MHz, 200mV	0.30	300
EDMC160808T-221Y-ABK	220	100MHz, 200mV	0.30	300
EDMC160808T-301Y-ABK	300	100MHz, 200mV	0.40	300
EDMC160808T-471Y-ABK	470	100MHz, 200mV	0.50	300
EDMC160808T-601Y-ABK	600	100MHz, 200mV	0.50	300
EDMC160808T-102Y-ABK	1000	100MHz, 200mV	0.60	300

#### 1. Testing Instrument

- Impedance : HP4291A
- RDC : HP4338B or CHEN HWA 502

#### 2. Rate Current : Applied the current to coils, the temperature rise shall not be more than 30°C

■ Graph

