

EDMC201209-AGK Series



5448-4, Sangdaewon-dong, Jungwon-gu,
Seongnam-si, Gyeonggi-do, KOREA

Sales Dept. TEL:82-31-730-5082

FAX:82-31-730-5152

Eng. Dept. TEL:82-31-730-5053

FAX:82-31-730-5153

■ Features

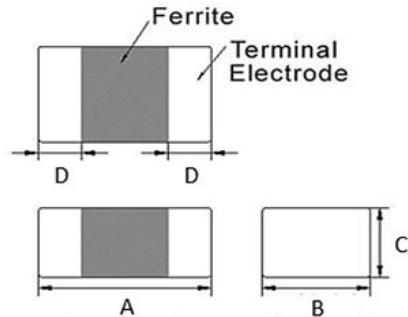
1. This specification applies to Multilayer Chip ferrite Bead for Automotive Electronics based on AEC-Q200 except for Power train and Safety.
2. Operating temperature -55°C ~ +125°C. (Including self - temperature rise)

■ Ordering Code

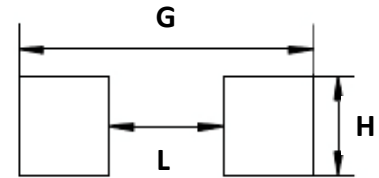
EDMC	201209	T	-	600	Y	-	AGK
①	②	③		④	⑤		⑥

① Type	② Dimensions(mm)	③ Packing						
EDMC	201209 : 2.0(L) × 1.25(W) × 0.9(T)	T TAPING						
④ Impedance(Ω)	⑤ Tolerance	⑥ Internal Code						
<table style="width: 100%; border-collapse: collapse;"> <tr> <td style="width: 50%; border-right: 1px solid black; text-align: center;">600</td> <td style="width: 50%; text-align: center;">60</td> </tr> <tr> <td style="border-right: 1px solid black; text-align: center;">121</td> <td style="text-align: center;">120</td> </tr> <tr> <td style="border-right: 1px solid black; text-align: center;">102</td> <td style="text-align: center;">1000</td> </tr> </table>	600	60	121	120	102	1000	Y : ±25%	AGK
600	60							
121	120							
102	1000							

■ Shapes and Dimensions



■ Recommended PC Board Pattern



Series	A(mm)	B(mm)	C(mm)	D(mm)
EDMC201209-AGK	2.0±0.2	1.25±0.2	0.9±0.2	0.5±0.3

L(mm)	G(mm)	H(mm)
1.0~1.2	2.6~4.0	1.0~1.2

■ Electrical Characteristics

Part Number	Impedance ($\Omega \pm 25\%$)	Test Freq.	RDC(Ω) Max.	Rated Current(mA)
				$\Delta T = 30^\circ\text{C}$ Max.
EDMC201209T-600Y-AGK	60	100MHz, 200mV	0.10	900
EDMC201209T-800Y-AGK	80	100MHz, 200mV	0.10	800
EDMC201209T-121Y-AGK	120	100MHz, 200mV	0.15	800
EDMC201209T-221Y-AGK	220	100MHz, 200mV	0.18	750
EDMC201209T-301Y-AGK	300	100MHz, 200mV	0.18	700
EDMC201209T-601Y-AGK	600	100MHz, 200mV	0.25	500
EDMC201209T-102Y-AGK	1000	100MHz, 200mV	0.30	400

1. Testing Instrument

- Impedance : HP4291A
- RDC :HP4338B or CHEN HWA 502

2. Rate Current : Applied the current to coils, the temperature rise shall not be more than 30°C

■ Graph

