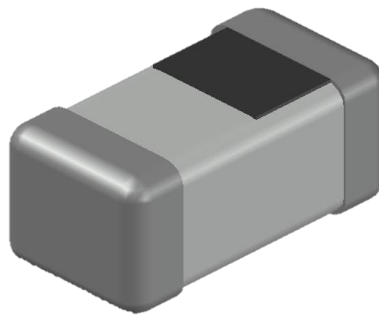


**ABCO Chip Ceramic Inductor**

## **LCMI100505-GN for Signal Inductor Series**



5448-4, Sangdaewon-dong, Jungwon-gu,  
Seongnam-si, Gyeonggi-do, KOREA

Sales Dept. TEL:82-31-730-5082

FAX:82-31-730-5152

Eng. Dept. TEL:82-31-730-5053

FAX:82-31-730-5153

# LCMI100505-GN Series



<http://www.abco.co.kr>

## ■ Features

1. Particular ceramic material and coil structure provide high frequency application range up to 10GHz.
2. Small size and low profile.
3. Available in various sizes.
4. Excellent solderability and heat resistance.

## ■ Applications

RF and wireless communication, information technology equipment which includes computer, telecommunications, radar detectors, automotive electronics, cellular phones, pagers, audio equipment, PDAs, keyless remote system and low-voltage power supply modules.

## ■ Ordering Code

**LCMI**   **100505**   **P** -   **10N**   **J** -   **GN**

①                      ②                      ③                      ④                      ⑤                      ⑥

① Type	
LCMI	

② Dimensions(mm)	
100505 : 1.0(L) × 0.5(W) × 0.5(T)	

③ Packing	
P	Embossed Paper Tape

④ Inductance(nH)	
0N3	0.3
1N0	1.0
10N	10
R10	100

⑤ Tolerance	
A	±0.1nH
B	±0.2nH
C	±0.3nH
G	±2%
H	±3%
J	±5%

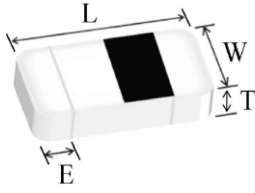
⑥ Internal Code
GN

# LCMI100505-GN Series

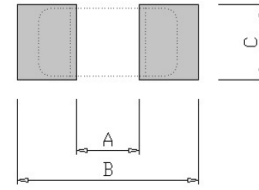


<http://www.abco.co.kr>

## ■ Shapes and Dimensions



## ■ Recommended PC Board Pattern



Series	L(mm)	W(mm)	T(mm)	E(mm)
LCMI100505-GN	1.00±0.10	0.50±0.10	0.50±0.10	0.10~0.30

A(mm)	B(mm)	C(mm)
0.4	1.4~1.5	0.5~0.6

## ■ Electrical Characteristics

Part No.	Inductance		Q	Test Freq.	SRF	DCR Max.	Rated Current
	(nH)	Tolerance	(Min)	(MHz)	(MHz)Min	(Ω)	Max(mA)
LCMI100505P-0N3A-GN	0.3	±0.1nH	8	100	10,000	0.08	1,000
LCMI100505P-0N4A-GN	0.4	±0.1nH	8	100	10,000	0.08	1,000
LCMI100505P-0N5A-GN	0.5	±0.1nH	8	100	10,000	0.08	1,000
LCMI100505P-0N6A-GN	0.6	±0.1nH	8	100	10,000	0.08	1,000
LCMI100505P-0N7A-GN	0.7	±0.1nH	8	100	10,000	0.08	1,000
LCMI100505P-0N8A-GN	0.8	±0.1nH	8	100	10,000	0.08	1,000
LCMI100505P-1N0A,B,C-GN	1.0	±0.1, 0.2, 0.3nH	8	100	10,000	0.08	1,000
LCMI100505P-1N1A,B,C-GN	1.1	±0.1, 0.2, 0.3nH	8	100	10,000	0.08	1,000
LCMI100505P-1N2A,B,C-GN	1.2	±0.1, 0.2, 0.3nH	8	100	10,000	0.09	1,000
LCMI100505P-1N3A,B,C-GN	1.3	±0.1, 0.2, 0.3nH	8	100	10,000	0.09	1,000
LCMI100505P-1N5A,B,C-GN	1.5	±0.1, 0.2, 0.3nH	8	100	10,000	0.10	1,000
LCMI100505P-1N6A,B,C-GN	1.6	±0.1, 0.2, 0.3nH	8	100	10,000	0.10	1,000
LCMI100505P-1N8A,B,C-GN	1.8	±0.1, 0.2, 0.3nH	8	100	10,000	0.12	900
LCMI100505P-2N0A,B,C-GN	2.0	±0.1, 0.2, 0.3nH	8	100	10,000	0.12	900
LCMI100505P-2N2A,B,C-GN	2.2	±0.1, 0.2, 0.3nH	8	100	10,000	0.13	900
LCMI100505P-2N4A,B,C-GN	2.4	±0.1, 0.2, 0.3nH	8	100	10,000	0.13	800
LCMI100505P-2N7A,B,C-GN	2.7	±0.1, 0.2, 0.3nH	8	100	6,000	0.16	800
LCMI100505P-3N0A,B,C-GN	3.0	±0.1, 0.2, 0.3nH	8	100	6,000	0.16	800
LCMI100505P-3N3A,B,C-GN	3.3	±0.1, 0.2, 0.3nH	8	100	6,000	0.16	800
LCMI100505P-3N6A,B,C-GN	3.6	±0.1, 0.2, 0.3nH	8	100	6,000	0.20	700
LCMI100505P-3N9A,B,C-GN	3.9	±0.1, 0.2, 0.3nH	8	100	6,000	0.20	700
LCMI100505P-4N3A,B,C-GN	4.3	±0.1, 0.2, 0.3nH	8	100	6,000	0.20	700
LCMI100505P-4N7A,B,C-GN	4.7	±0.1, 0.2, 0.3nH	8	100	6,000	0.20	700
LCMI100505P-5N1A,B,C-GN	5.1	±0.1, 0.2, 0.3nH	8	100	5,300	0.23	600
LCMI100505P-5N6A,B,C-GN	5.6	±0.1, 0.2, 0.3nH	8	100	4,500	0.23	600
LCMI100505P-6N2A,B,C-GN	6.2	±0.1, 0.2, 0.3nH	8	100	4,500	0.25	600
LCMI100505P-6N8G,H,J-GN	6.8	±2, 3, 5%	8	100	4,500	0.25	600
LCMI100505P-7N5G,H,J-GN	7.5	±2, 3, 5%	8	100	4,200	0.28	500
LCMI100505P-8N2G,H,J-GN	8.2	±2, 3, 5%	8	100	3,700	0.28	500

# LCMI100505-GN Series



<http://www.abco.co.kr>

## ■ Electrical Characteristics

Part No.	Inductance		Q	Test Freq.	SRF	DCR Max.	Rated Current
	(nH)	Tolerance	(Min)	(MHz)	(MHz)Min	(Ω)	Max(mA)
LCMI100505P-9N1G,H,J-GN	9.1	±2, 3, 5%	8	100	3,400	0.30	500
LCMI100505P-10NG,H,J-GN	10	±2, 3, 5%	8	100	3,400	0.30	500
LCMI100505P-12NG,H,J-GN	12	±2, 3, 5%	8	100	3,000	0.45	400
LCMI100505P-15NG,H,J-GN	15	±2, 3, 5%	8	100	2,500	0.55	400
LCMI100505P-18NG,H,J-GN	18	±2, 3, 5%	8	100	2,200	0.65	300
LCMI100505P-22NG,H,J-GN	22	±2, 3, 5%	8	100	1,900	0.70	300
LCMI100505P-27NG,H,J-GN	27	±2, 3, 5%	8	100	1,700	0.80	300
LCMI100505P-33NG,H,J-GN	33	±2, 3, 5%	8	100	1,600	0.90	200
LCMI100505P-39NG,H,J-GN	39	±2, 3, 5%	8	100	1,200	1.00	200
LCMI100505P-47NG,H,J-GN	47	±2, 3, 5%	8	100	1,100	1.10	200
LCMI100505P-56NG,H,J-GN	56	±2, 3, 5%	8	100	1,000	1.10	200
LCMI100505P-68NG,H,J-GN	68	±2, 3, 5%	8	100	800	1.20	200
LCMI100505P-82NJ-GN	82	±5%	8	100	600	1.30	200
LCMI100505P-R10J-GN	100	±5%	8	100	600	1.60	200
LCMI100505P-R12J-GN	120	±5%	8	100	600	1.60	150
LCMI100505P-R15J-GN	150	±5%	8	100	550	3.20	140

### 1. Testing Instrument

- Agilent E4991A RF IMPEDANCE
- Material Analyzer with fixture 16197A or Equivalent
- Agilent 4338B Milliohm meter

### 2. Operating temperature -40°C ~125°C

### 3. Test level 500mV.