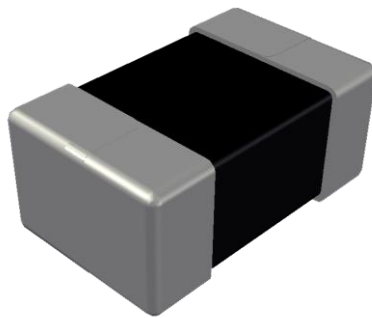


ABCO Chip Ferrite Inductor

LFMI160808-PP for Power Inductor Series



5448-4, Sangdaewon-dong, Jungwon-gu,
Seongnam-si, Gyeonggi-do, KOREA

Sales Dept. TEL:82-31-730-5082

FAX:82-31-730-5152

Eng. Dept. TEL:82-31-730-5053

FAX:82-31-730-5153

LFMI160808-PP Series



<http://www.abco.co.kr>

■ Features

High performance, low profile multilayer power inductors with superior DC superimposing characteristics and low DC resistance.

■ Applications

Small mobile devices such as smartphones, wifi module, lot module, SSD etc.

■ Ordering Code

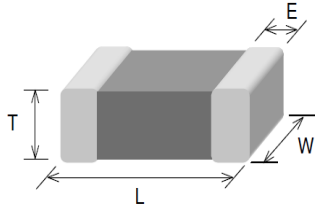
LFMI	160808	P	-	R24	M	-	PP
①	②	③		④	⑤		⑥
① Type		② Dimensions(mm)			③ Packing		
LFMI		160808 : 1.6(L) × 0.8(W) × 0.8(T)			P	Embossed Paper Tape	
④ Inductance(uH)		⑤ Tolerance			⑥ Internal Code		
R24	0.24	M	±20%		PP		
2R2	2.2						

LFMI160808-PP Series



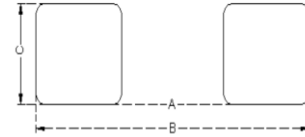
<http://www.abco.co.kr>

▣ Shapes and Dimensions



Series	L(mm)	W(mm)	T(mm)	E(mm)
LFMI160808-PP	1.60±0.15	0.80±0.15	0.80±0.15	0.30±0.20

▣ Recommended PC Board Pattern



A(mm)	B(mm)	C(mm)
0.5~0.7	1.8~2.0	0.65~0.95

▣ Electrical Characteristics

Part No.	Inductance	Test Freq.	SRF	DCR±25%	Rated Current
	(μH)	(MHz)	(MHz)	(Ω)	(mA)
LFMI160808P-R24M-PP	0.24±20%	1	90	0.100	1,200
LFMI160808P-R47M-PP	0.47±20%	1	70	0.100	1,200
LFMI160808P-1R0M-PP	1.00±20%	1	60	0.200	950
LFMI160808P-2R2M-PP	2.20±20%	1	50	0.300	750

1. Testing Instrument

- HP4291B RF IMPEDANCE / MATERIAL ANALYZER
- HP4338A/B MILLIOHMMETER

2. Operating temperature -40°C ~85°C

3. All test data is referenced to 25°C ambient. Test level 100mV