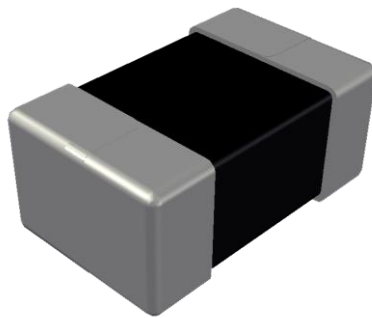


ABCO Chip Ferrite Inductor

LFMI201209-EP for Power Inductor Series



5448-4, Sangdaewon-dong, Jungwon-gu,
Seongnam-si, Gyeonggi-do, KOREA

Sales Dept. TEL:82-31-730-5082

FAX:82-31-730-5152

Eng. Dept. TEL:82-31-730-5053

FAX:82-31-730-5153

LFMI201209-EP Series



<http://www.abco.co.kr>

▣ Features

High performance, low profile multilayer power inductors with superior DC superimposing characteristics and low DC resistance.

▣ Applications

Small mobile devices such as smartphones, wifi module, lot module, SSD etc.

▣ Ordering Code

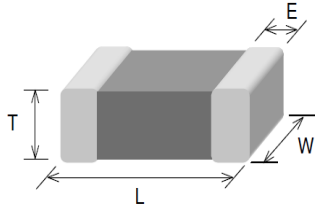
LFMI	201209	E	-	1R0	M	-	EP
①	②	③		④	⑤		⑥
① Type		② Dimensions(mm)			③ Packing		
LFMI		201209 : 2.0(L) × 1.25(W) × 0.9(T)			E	Embossed Plastic Tape	
④ Inductance(uH)		⑤ Tolerance			⑥ Internal Code		
1R0	1.0	M	±20%		EP		

LFMI201209-EP Series



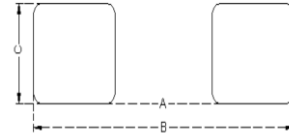
<http://www.abco.co.kr>

▣ Shapes and Dimensions



Series	L(mm)	W(mm)	T(mm)	E(mm)
LFMI201209-EP	2.00±0.20	1.25±0.20	0.90±0.10	0.50±0.30

▣ Recommended PC Board Pattern



A(mm)	B(mm)	C(mm)
1.0~1.2	3.0~4.0	0.8~1.1

▣ Electrical Characteristics

Part No.	Inductance	Test Freq.	SRF	DCR±25%	Rated Current
	(μ H)	(MHz)	(MHz)	(Ω)	(mA)
LFMI201209E-1R0M-EP	1.0±20%	1	90	0.100	1,100
LFMI201209E-2R2M-EP	2.2±20%	1	70	0.170	900
LFMI201209E-3R3M-EP	3.3±20%	1	50	0.200	800
LFMI201209E-4R7M-EP	4.7±20%	1	40	0.230	700

1. Testing Instrument

- HP4291B RF IMPEDANCE / MATERIAL ANALYZER
- HP4338A/B MILLIOHMMETER

2. Operating temperature -40°C ~85°C

3. All test data is referenced to 25°C ambient. Test level 100mV

4. Apply DC 0.4~0.6A to chip for 1~3 sec. before to measure inductance.