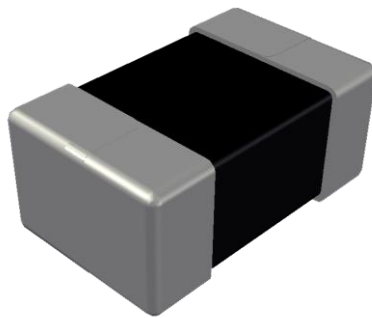


**ABCO Chip Ferrite Inductor**

## **LFMI201209-WP for Power Inductor Series**



5448-4, Sangdaewon-dong, Jungwon-gu,  
Seongnam-si, Gyeonggi-do, KOREA

Sales Dept. TEL:82-31-730-5082

FAX:82-31-730-5152

Eng. Dept. TEL:82-31-730-5053

FAX:82-31-730-5153

---

**ABCO ELECTRONICS CO., LTD.**

# LFMI201209-WP Series



<http://www.abco.co.kr>

## ■ Features

High performance, low profile multilayer power inductors with superior DC superimposing characteristics and low DC resistance.

## ■ Applications

Small mobile devices such as smartphones, wifi module, lot module, SSD etc.

## ■ Ordering Code

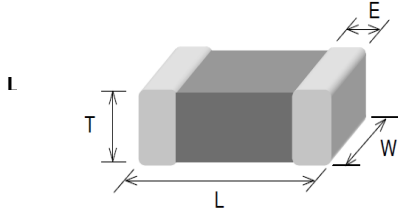
<b>LFMI</b>	<b>201209</b>	<b>E</b>	<b>-</b>	<b>2R2</b>	<b>M</b>	<b>-</b>	<b>WP</b>
①	②	③		④	⑤		⑥
① Type		② Dimensions(mm)			③ Packing		
LFMI		201209 : 2.0(L) × 1.25(W) × 0.9(T)			E	Embossed Plastic Tape	
④ Inductance(uH)		⑤ Tolerance			⑥ Internal Code		
2R2	2.2	M	±20%		WP		

# LFMI201209-WP Series



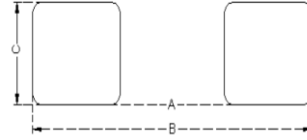
<http://www.abco.co.kr>

## ▣ Shapes and Dimensions



Series	L(mm)	W(mm)	T(mm)	E(mm)
LFMI201209-WP	2.00±0.20	1.25±0.20	0.90±0.10	0.50±0.30

## ▣ Recommended PC Board Pattern



A(mm)	B(mm)	C(mm)
1.0~1.2	3.0~4.0	0.8~1.1

## ▣ Electrical Characteristics

Part No.	Inductance	Test Freq.	SRF	DCR±25%	Rated Current
	( $\mu$ H)	(MHz)	(MHz)	( $\Omega$ )	(mA)
LFMI201209E-2R2M-WP	2.2±20%	1	85	0.34	700
LFMI201209E-4R7M-WP	4.7±20%	1	50	0.46	500
LFMI201209E-5R6M-WP	5.6±20%	1	30	0.46	500

### 1. Testing Instrument

- HP4291B RF IMPEDANCE / MATERIAL ANALYZER
- HP4338A/B MILLIOHMMETER

### 2. Operating temperature -40°C ~85°C

3. All test data is referenced to 25°C ambient. Test level 100mV

4. Apply DC 0.4~0.6A to chip for 1~3 sec. before to measure inductance.