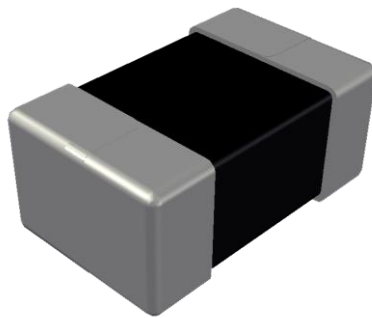


**ABCO Chip Ferrite Inductor**

## **LFMI252009-WP for Power Inductor Series**



5448-4, Sangdaewon-dong, Jungwon-gu,  
Seongnam-si, Gyeonggi-do, KOREA

Sales Dept. TEL:82-31-730-5082

FAX:82-31-730-5152

Eng. Dept. TEL:82-31-730-5053

FAX:82-31-730-5153

# LFMI252009-WP Series



<http://www.abco.co.kr>

## ▣ Features

High performance, low profile multilayer power inductors with superior DC superimposing characteristics and low DC resistance.

## ▣ Applications

Small mobile devices such as smartphones, wifi module, lot module, SSD etc.

## ▣ Ordering Code

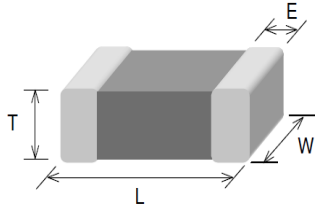
<b>LFMI</b>	<b>252009</b>	<b>E</b>	<b>-</b>	<b>1R0</b>	<b>M</b>	<b>-</b>	<b>WP</b>
①	②	③		④	⑤		⑥
① Type		② Dimensions(mm)			③ Packing		
LFMI		252009 : 2.5(L) × 2.0(W) × 0.9(T)			E	Embossed Plastic Tape	
④ Inductance(uH)		⑤ Tolerance			⑥ Internal Code		
1R0	1.0	M	±20%		WP		

# LFMI252009-WP Series



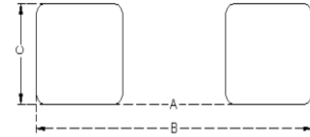
<http://www.abco.co.kr>

## ▣ Shapes and Dimensions



Series	L(mm)	W(mm)	T(mm)	E(mm)
LFMI252009-WP	2.50±0.20	2.00±0.20	0.90±0.10	0.50±0.30

## ▣ Recommended PC Board Pattern



A(mm)	B(mm)	C(mm)
1.2~1.5	3.5~4.0	1.5~2.0

## ▣ Electrical Characteristics

Part No.	Inductance	Test Freq.	SRF	DCR±25%	Rated Current
	(μH)	(MHz)	(MHz)	(Ω)	(mA)
LFMI252009E-1R0M-WP	1.0±20%	1	70	0.11	1,400
LFMI252009E-2R2M-WP	2.2±20%	1	50	0.16	1,100
LFMI252009E-3R3M-WP	3.3±20%	1	40	0.20	1,000
LFMI252009E-4R7M-WP	4.7±20%	1	30	0.22	900

### 1. Testing Instrument

- HP4291B RF IMPEDANCE / MATERIAL ANALYZER
- HP4338A/B MILLIOHMMETER

### 2. Operating temperature -40°C ~85°C

3. All test data is referenced to 25°C ambient. Test level 100mV

4. Apply DC 0.4~0.6A to chip for 1~3 sec. before to measure inductance.