

LMC1005-MC SERIES



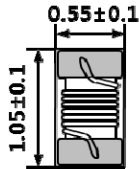
<http://www.abco.co.kr>

LMC1005-MC SERIES

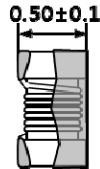
■ SHAPE & DIMENSIONS / RECOMMENDED SOLDER LAND PATTERN

(Unit : mm)

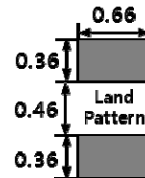
BOTTOM VIEW



SIDE VIEW



※PCB PATTERNS



■ ELECTRICAL CHARACTERISTICS

Ordering code	Inductance [nH]	Tolerance (%)	Q (min.)	SRF Min. (MHZ)	Rdc Max. (Ω)	Idc Max. (mA)
LMC1005TP - 1N3B-MC	1.3@ 100MHZ	± 0.2nH	13	8500	0.016	2640
LMC1005TP - 1N4B-MC	1.7@ 100MHZ	± 0.2nH	14	8500	0.021	2350
LMC1005TP - 1N5A-MC	1.8@ 100MHZ	± 0.1nH	14	8500	0.030	1950
LMC1005TP - 1N6B-MC	2.0@ 100MHZ	± 0.2nH	11	8500	0.045	1520
LMC1005TP - 2N7A-MC	2.7@ 100MHZ	± 0.1nH	20	8500	0.045	1600
LMC1005TP - 4N7A-MC	4.7@ 100MHZ	± 0.1nH	21	6500	0.065	1650
LMC1005TP - 5N1A-MC	5.1@ 100MHZ	± 0.1nH	18	6500	0.120	870
LMC1005TP - 6N8G-MC	6.8@ 100MHZ	± 2	22	6500	0.074	1200
LMC1005TP - 7N5G-MC	7.5@ 100MHZ	± 2	20	6500	0.130	900
LMC1005TP - 8N2G-MC	8.2@ 100MHZ	± 2	23	6500	0.064	1400
LMC1005TP - 13NG-MC	13@ 100MHZ	± 2	23	4300	0.140	870
LMC1005TP - 15NG-MC	15@ 100MHZ	± 2	24	4300	0.122	1000
LMC1005TP - 20NG-MC	20@ 100MHZ	± 2	23	3850	0.250	750
LMC1005TP - 24NG-MC	24@ 100MHZ	± 2	25	3600	0.340	600
LMC1005TP - 33NG-MC	33@ 100MHZ	± 2	23	3150	0.450	580
LMC1005TP - 39NG-MC	39@ 100MHZ	± 2	22	2700	0.740	410
LMC1005TP - 68NJ-MC	68@ 100MHZ	± 5	21	2200	1.250	320

▼ Test Equipments

- Inductance/Q measured : Keysight E4991B Impedance Analyzer 1MHz ~ 3GHz
+ E4991B Test Head +16197A or equivalent
- SRF Measured : Agilent E5071B 300KHz ~ 8.5GHz ENA Series Network Analyzer
+ ABCO Test Fixture or equivalent
- RDC Measured : HIOKI 3540mΩ HITESTER or equivalent
- IDC For 15°C rise : Agilent 6692A 0-60V/0-110A SYSTEM DC POWER SUPPLY
+ YOKOGAWA DR130 HYBRID RECORDER or equivalent U89