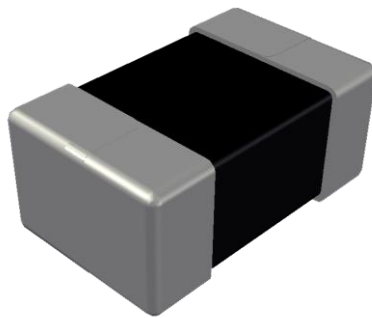


ABCO Chip Metal Inductor

LPP201210-K Series



5448-4, Sangdaewon-dong, Jungwon-gu,
Seongnam-si, Gyeonggi-do, KOREA

Sales Dept. TEL:82-31-730-5082

FAX:82-31-730-5152

Eng. Dept. TEL:82-31-730-5034

FAX:82-31-730-5132

ABCO ELECTRONICS CO., LTD.

LPP201210-K Series



<http://www.abco.co.kr>

▣ Features

This specification applies to Molding power inductors

▣ Ordering Code

LPP **201210** **T** - **R47** **M** - **K**
① ② ③ ④ ⑤ ⑥

① Type	
LPP	

② Dimensions(mm)	
201210 : 2.0(L) × 1.25(W) × 1.0(T)	

③ Packing	
T	Taping Type.

④ Inductance(uH)	
R47	0.47

⑤ Tolerance	
M	±20%

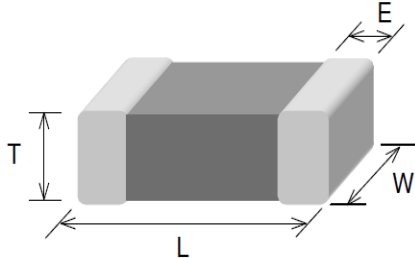
⑥ Internal Code	
K	

LPP201210-K Series



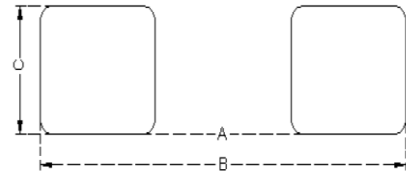
<http://www.abco.co.kr>

▣ Shapes and Dimensions



Series	L(mm)	W(mm)	T(mm)	E(mm)
LPP201210-K	2.0±0.2	1.25±0.2	1.0 Max	0.5±0.3

▣ Recommended PC Board Pattern



A(mm)	B(mm)	C(mm)
0.8~1.2	2.3~2.9	1.0~1.45

▣ Electrical Characteristics

Part No.	Inductance	Test Freq.	Rdc(mΩ)	Isat(A)	Irms(A)
	(μH)	(MHz)	Max.(Typ.)	Max.(Typ.)	Max.(Typ.)
LPP201210T-R47M-K	0.47±20%	2	25.0(22.0)	4.4(4.6)	4.0(4.2)

1. Testing Instrument

- L : Agilent E4991/HP4286A+16197A (or equivalent), 2MHz 0.2V
- RDC : CHEN HWA502BC/HP4338B (or equivalent)
- Isat : Agilent E4980A+HP42841A (or equivalent)
- Irms : Agilent 6641 SYSTEM DC POWER SUPPLY (or equivalent)

2. Isat for Inductance drop 30% from its value without current.

3. Irms for a 40°C temperature rise from 25°C ambient.

4. Rated current: Isat or Irms, whichever is smaller

5. Operate temp. range : -40°C ~ +125°C (including self temp. rise)