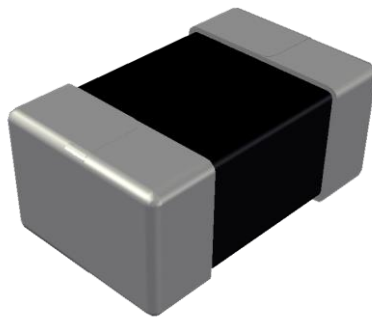


**ABCO Chip Metal Inductor**

## **LPP201210 Series**



5448-4, Sangdaewon-dong, Jungwon-gu,  
Seongnam-si, Gyeonggi-do, KOREA

Sales Dept. TEL:82-31-730-5082

FAX:82-31-730-5152

Eng. Dept. TEL:82-31-730-5034

FAX:82-31-730-5132

---

**ABCO ELECTRONICS CO., LTD.**

# LPP201210 Series



<http://www.abco.co.kr>

## ▣ Features

This specification applies to Molding power inductors

## ▣ Ordering Code

**LPP**    **201210**    **T** -    **1R5**    **M**  
①                    ②                    ③                    ④                    ⑤

① Type
LPP

② Dimensions(mm)
201210 : 2.1(L) × 1.3(W) × 0.9(T)

③ Packing	
T	Taping Type.

④ Inductance(uH)	
R47	0.47
1R5	1.5

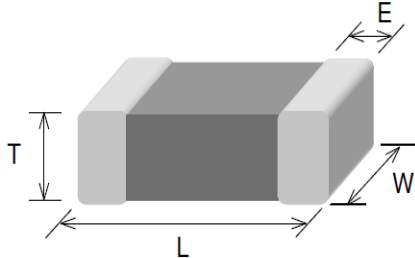
⑤ Tolerance	
M	±20%

# LPP201210 Series



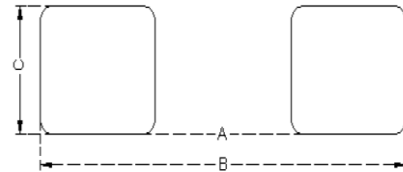
<http://www.abco.co.kr>

## ▣ Shapes and Dimensions



Series	L(mm)	W(mm)	T(mm)	E(mm)
LPP201210	2.1±0.10	1.3±0.10	0.9±0.1	0.5±0.2

## ▣ Recommended PC Board Pattern



A(mm)	B(mm)	C(mm)
0.8~1.2	2.3~2.9	1.0~1.4

## ▣ Electrical Characteristics

Part No.	Inductance	Test Freq.	Rdc(mΩ)	Isat(A)	Irms(A)
	(μH)	(MHz)	Max.(Typ.)	Max.(Typ.)	Max.(Typ.)
LPP201210T-R47M	0.47±20%	2	40(34)	3.0(3.4)	3.0(3.3)
LPP201210T-1R0M	1.0±20%	2	82(74)	2.6(3.2)	2.1(2.4)
LPP201210T-1R5M	1.5±20%	2	112(94)	1.9(2.3)	1.8(2.2)
LPP201210T-2R2M	2.2±20%	2	176(166)	1.6(1.7)	1.4(1.5)

### 1. Testing Instrument

- L : Agilent E4991/HP4286A+16197A (or equivalent), 2MHz 0.2V
- RDC : CHEN HWA502BC/HP4338B (or equivalent)
- Isat : Agilent E4980A+HP42841A (or equivalent)
- Irms : Agilent 6641 SYSTEM DC POWER SUPPLY (or equivalent)

2. Isat for Inductance drop 30% from its value without current.

3. Irms for a 40°C temperature rise from 25°C ambient.

4. Rated current: Isat or Irms, whichever is smaller

5. Operate temp. range : -40°C ~ +125°C ( including self temp. rise)