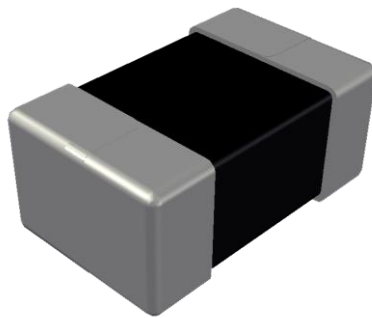


ABCO Chip Metal Inductor

LPP201610-D Series



5448-4, Sangdaewon-dong, Jungwon-gu,
Seongnam-si, Gyeonggi-do, KOREA

Sales Dept. TEL:82-31-730-5082

FAX:82-31-730-5152

Eng. Dept. TEL:82-31-730-5034

FAX:82-31-730-5132

LPP201610-D Series



<http://www.abco.co.kr>

▣ Features

This specification applies to Molding power inductors

▣ Ordering Code

LPP **201610** **T** - **1R0** **M** - **D**
① ② ③ ④ ⑤ ⑥

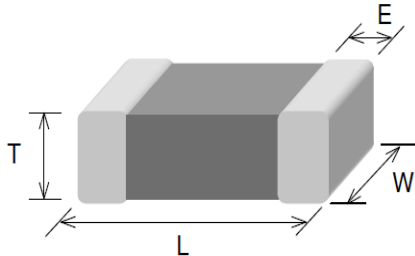
① Type		② Dimensions(mm)		③ Packing	
LPP		201610 : 2.05(L) × 1.7(W) × 0.9(T)		T	Taping Type.
④ Inductance(uH)		⑤ Tolerance		⑥ Internal Code	
1R0	1.00	M	±20%	D	

LPP201610-D Series

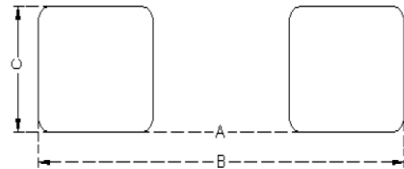


<http://www.abco.co.kr>

▣ Shapes and Dimensions



▣ Recommended PC Board Pattern



Series	L(mm)	W(mm)	T(mm)	E(mm)
LPP201610-D	2.05±0.1	1.7±0.05/-0.10	0.9±0.1	0.5±0.2

A(mm)	B(mm)	C(mm)
0.7	2.3	1.8

▣ Electrical Characteristics

Part No.	Inductance	Test Freq.	Rdc(mΩ)	Isat(A)	Irms(A)
	(μH)	(MHz)	Max.(Typ.)	Max.(Typ.)	Max.(Typ.)
LPP201610T-1R0M-D	1.0±20%	2	43(38)	4.2(4.5)	4.1(4.3)

1. Testing Instrument

- L : Agilent E4991/HP4286A+16197A (or equivalent), 2MHz 0.2V
 - RDC : CHEN HWA502BC/HP4338B (or equivalent)
 - Isat : Agilent E4980A+HP42841A (or equivalent)
 - Irms : Agilent 6641 SYSTEM DC POWER SUPPLY (or equivalent)
2. Isat for Inductance drop 30% from its value without current.
 3. Irms for a 40°C temperature rise from 25°C ambient.
 4. Rated current: Isat or Irms, whichever is smaller
 5. Operate temp. range : -40°C ~ +125°C (including self temp. rise)