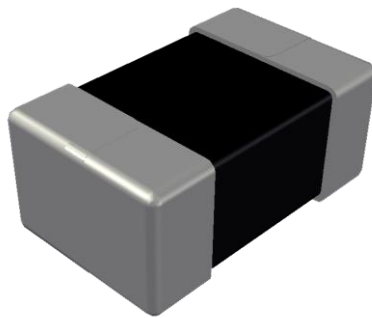


**ABCO Chip Metal Inductor**

## **LPP252010-1 Series**



5448-4, Sangdaewon-dong, Jungwon-gu,  
Seongnam-si, Gyeonggi-do, KOREA

Sales Dept. TEL:82-31-730-5082

FAX:82-31-730-5152

Eng. Dept. TEL:82-31-730-5034

FAX:82-31-730-5132

# LPP252010-1 Series



<http://www.abco.co.kr>

## ▣ Features

This specification applies to Molding power inductors

## ▣ Ordering Code

**LPP    252010    T    -    1R0    M    -    1**  
①                    ②                    ③                    ④                    ⑤                    ⑥

① Type
LPP

② Dimensions(mm)
252010 : 2.5(L) × 2.0(W) × 0.9(T)

③ Packing
T                    Taping Type.

④ Inductance(uH)
1R0                    1.00

⑤ Tolerance
M                    ±20%

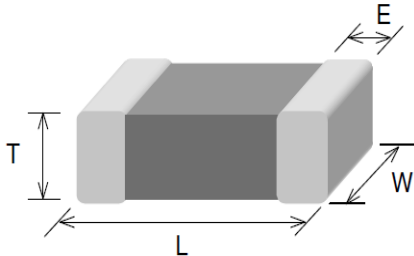
⑥ Internal Code
1

# LPP252010-1 Series



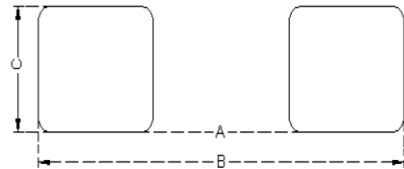
<http://www.abco.co.kr>

## ▣ Shapes and Dimensions



Series	L(mm)	W(mm)	T(mm)	E(mm)
LPP252010-1	2.5±0.2	2.0±0.2	0.9±0.1	0.6±0.3

## ▣ Recommended PC Board Pattern



A(mm)	B(mm)	C(mm)
1.2	2.8	2.3

## ▣ Electrical Characteristics

Part No.	Inductance	Test Freq.	Rdc(mΩ)	Isat(A)	Irms(A)
	(μH)	(MHz)	Max.(Typ.)	Max.(Typ.)	Max.(Typ.)
LPP252010T-1R0M-1	1.0±20%	2	40(38)	3.4(3.7)	3.3(3.5)
LPP252010T-2R2M-1	2.2±20%	2	97(87)	2.5(3.0)	2.2(2.5)

### 1. Testing Instrument

- L : Agilent E4991/HP4286A+16197A (or equivalent), 2MHz 0.2V
  - RDC : CHEN HWA502BC/HP4338B (or equivalent)
  - Isat : Agilent E4980A+HP42841A (or equivalent)
  - Irms : Agilent 6641 SYSTEM DC POWER SUPPLY (or equivalent)
2. Isat for Inductance drop 30% from its value without current.
  3. Irms for a 40°C temperature rise from 25°C ambient.
  4. Rated current: Isat or Irms, whichever is smaller
  5. Operate temp. range : -40°C ~ +125°C ( including self temp. rise)