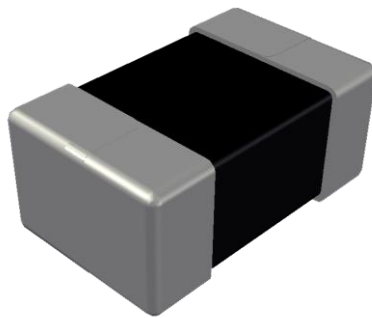


ABCO Chip Ferrite Inductor

LPP252010-2 Series



5448-4, Sangdaewon-dong, Jungwon-gu,
Seongnam-si, Gyeonggi-do, KOREA

Sales Dept. TEL:82-31-730-5082

FAX:82-31-730-5152

Eng. Dept. TEL:82-31-730-5034

FAX:82-31-730-5132

LPP252010-2 Series



<http://www.abco.co.kr>

▣ Features

This specification applies to Molding power inductors

▣ Ordering Code

LPP **252010** **T** - **1R0** **M** - **2**
① ② ③ ④ ⑤ ⑥

| ① Type |
|--------|
| LPP |

| ② Dimensions(mm) |
|-----------------------------------|
| 252010 : 2.5(L) × 2.0(W) × 1.0(T) |

| ③ Packing |
|---------------------|
| T Taping Type. |

| ④ Inductance(uH) |
|------------------|
| 1R0 1.00 |

| ⑤ Tolerance |
|-------------|
| M ±20% |

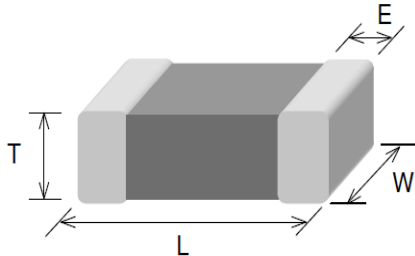
| ⑥ Internal Code |
|-----------------|
| 2 |

LPP252010-2 Series



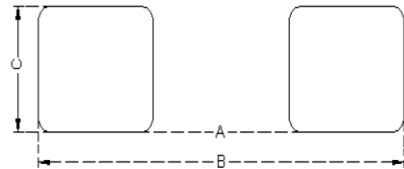
<http://www.abco.co.kr>

▣ Shapes and Dimensions



| Series | L(mm) | W(mm) | T(mm) | E(mm) |
|-------------|---------|---------|----------|---------|
| LPP252010-2 | 2.5±0.3 | 2.0±0.3 | 1.0 Max. | 0.6±0.3 |

▣ Recommended PC Board Pattern



| A(mm) | B(mm) | C(mm) |
|-------|-------|-------|
| 1.2 | 2.8 | 2.0 |

▣ Electrical Characteristics

| Part No. | Inductance | Test Freq. | Rdc(mΩ) | Isat(A) | Irms(A) |
|-------------------|------------|------------|------------|------------|------------|
| | (μH) | (MHz) | Max.(Typ.) | Max.(Typ.) | Max.(Typ.) |
| LPP252010T-1R0M-2 | 1.0±20% | 2 | 40(38) | 3.4(3.7) | 3.3(3.5) |
| | | | | | |
| | | | | | |
| | | | | | |

1. Testing Instrument

- L : Agilent E4991/HP4286A+16197A (or equivalent), 2MHz 0.2V
- RDC : CHEN HWA502BC/HP4338B (or equivalent)
- Isat : Agilent E4980A+HP42841A (or equivalent)
- Irms : Agilent 6641 SYSTEM DC POWER SUPPLY (or equivalent)

2. Isat for Inductance drop 30% from its value without current.

3. Irms for a 40°C temperature rise from 25°C ambient.

4. Rated current: Isat or Irms, whichever is smaller

5. Operate temp. range : -40°C ~ +125°C (including self temp. rise)