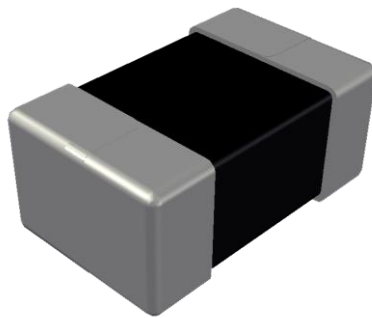


ABCO Chip Ferrite Inductor

LPP252010-3 Series



5448-4, Sangdaewon-dong, Jungwon-gu,
Seongnam-si, Gyeonggi-do, KOREA

Sales Dept. TEL:82-31-730-5082

FAX:82-31-730-5152

Eng. Dept. TEL:82-31-730-5034

FAX:82-31-730-5132

ABCO ELECTRONICS CO., LTD.

LPP252010-3 Series



<http://www.abco.co.kr>

▣ Features

This specification applies to Molding power inductors

▣ Ordering Code

LPP **252010** **T** - **1R0** **M** - **3**
① ② ③ ④ ⑤ ⑥

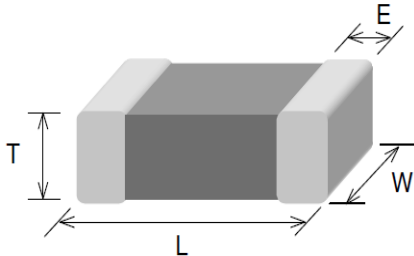
① Type	② Dimensions(mm)	③ Packing
LPP	252010 : 2.5(L) × 2.0(W) × 0.9(T)	T Taping Type.
④ Inductance(uH)	⑤ Tolerance	⑥ Internal Code
1R0 1.00	M ±20%	3

LPP252010-3 Series



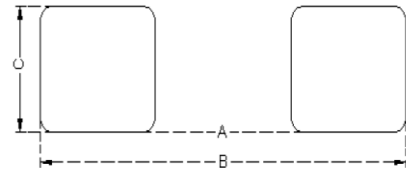
<http://www.abco.co.kr>

▣ Shapes and Dimensions



Series	L(mm)	W(mm)	T(mm)	E(mm)
LPP252010-3	2.5±0.2	2.0±0.2	0.9±0.1	0.6±0.3

▣ Recommended PC Board Pattern



A(mm)	B(mm)	C(mm)
1.2	2.8	2.3

▣ Electrical Characteristics

Part No.	Inductance	Test Freq.	Rdc(mΩ)	Isat(A)	Irms(A)
	(μH)	(MHz)	Max.(Typ.)	Max.(Typ.)	Max.(Typ.)
LPP252010T-1R0M-3	1.0±20%	2	50(43)	3.8(4.2)	3.1(3.5)

1. Testing Instrument

- L : Agilent E4991/HP4286A+16197A (or equivalent), 2MHz 0.2V
 - RDC : CHEN HWA502BC/HP4338B (or equivalent)
 - Isat : Agilent E4980A+HP42841A (or equivalent)
 - Irms : Agilent 6641 SYSTEM DC POWER SUPPLY (or equivalent)
2. Isat for Inductance drop 30% from its value without current.
 3. Irms for a 40°C temperature rise from 25°C ambient.
 4. Rated current: Isat or Irms, whichever is smaller
 5. Operate temp. range : -40°C ~ +125°C (including self temp. rise)