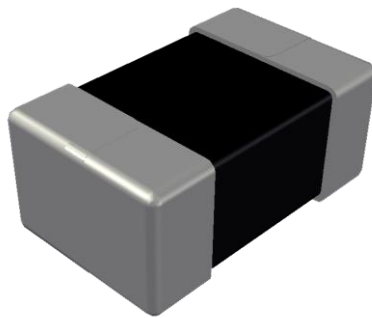


ABCO Chip Ferrite Inductor

LPP252012-S Series



5448-4, Sangdaewon-dong, Jungwon-gu,
Seongnam-si, Gyeonggi-do, KOREA

Sales Dept. TEL:82-31-730-5082

FAX:82-31-730-5152

Eng. Dept. TEL:82-31-730-5034

FAX:82-31-730-5132

ABCO ELECTRONICS CO., LTD.

LPP252012-S Series



<http://www.abco.co.kr>

▣ Features

This specification applies to Molding power inductors

▣ Ordering Code

LPP **252012** **T** - **2R2** **M** - **S**
① ② ③ ④ ⑤ ⑥

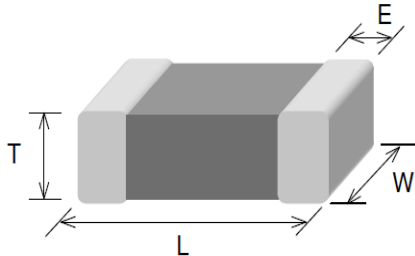
① Type	② Dimensions(mm)	③ Packing
LPP	252012 : 2.5(L) × 2.0(W) × 1.2(T)	T Taping Type.
④ Inductance(uH)	⑤ Tolerance	⑥ Internal Code
2R2 2.20	M ±20%	S

LPP252012-S Series



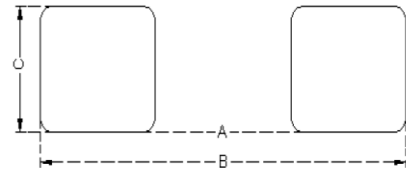
<http://www.abco.co.kr>

▣ Shapes and Dimensions



Series	L(mm)	W(mm)	T(mm)	E(mm)
LPP252012-S	2.5±0.3	2.0±0.3	1.2 Max.	0.6±0.3

▣ Recommended PC Board Pattern



A(mm)	B(mm)	C(mm)
1.2	2.8	2.3

▣ Electrical Characteristics

Part No.	Inductance	Test Freq.	Rdc(mΩ)	Isat(A)	Irms(A)
	(μH)	(MHz)	Max.(Typ.)	Max.(Typ.)	Max.(Typ.)
LPP252012T-2R2M-S	2.2±20%	2	115(102)	3.3(3.8)	2.0(2.3)
LPP252012T-4R7M-S	4.7±20%	2	240(200)	2.1(2.7)	1.7(2.1)

1. Testing Instrument

- L : Agilent E4991/HP4286A+16197A (or equivalent), 2MHz 0.2V
- RDC : CHEN HWA502BC/HP4338B (or equivalent)
- Isat : Agilent E4980A+HP42841A (or equivalent)
- Irms : Agilent 6641 SYSTEM DC POWER SUPPLY (or equivalent)

2. Isat for Inductance drop 30% from its value without current.

3. Irms for a 40°C temperature rise from 25°C ambient.

4. Rated current: Isat or Irms, whichever is smaller

5. Operate temp. range : -40°C ~ +125°C (including self temp. rise)